

Kobe PR digest June 2026

Disaster Safety

【特集】もっと話そう【防災】のこと



変わる気象警報、
変えよう防災意識

防災気象情報のしくみが変わります。
いざというときに命を守る
行動がとれるよう
正しい知識を身につけて
災害に備えましょう。

If you have any questions about ward office procedures, financial support for raising children, etc.



↑ Scan here to visit the website!

Call the Kobe International Community Center (KICC)!

☎ 078-742-872 | (11 languages)



Edited & Translated by:

Kobe City Community Engagement Division, Kobe City International Division

Stay Informed, Stay Safe

Hazard Maps

Knowing the potential natural disaster risks around your neighborhood and identifying evacuation shelters and evacuation routes ahead of time can help keep you safe in an emergency.



Real-Time Disaster Prevention Information

Kobe City's dedicated disaster and emergency information webpage provides key information you may need during a disaster.

Up-to-date official disaster information is available for each ward.



Kobe City Official LINE Account

Receive emergency alerts on your smartphone, including earthquake and tsunami updates, weather warnings, and evacuation information, by adding Kobe City's official LINE account and selecting "Disaster Information" (防災情報) in your notification settings.

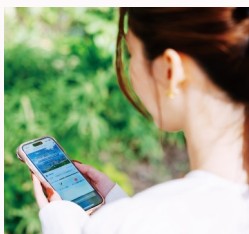


Looking for Online Survey Participants!

Calling All Young Residents to Join Our Online Surveys

Kobe City is looking for people to participate in online questionnaires, which are conducted once or twice a month.

Participants who accumulate 1,000 points or more by completing surveys will receive a ¥1,000 digital gift voucher as a thank-you reward.



Eligibility

Residents, workers, and students in Kobe City who are 15 years of age or older (excluding junior high school students).

How to Register

Register through the “Net Monitor” (ネットモニター) section of Kobe City’s official LINE account.



Special Campaign for Select Participants

Anyone aged 15–29 who registers as a new survey participant by August 31 and completes two or more surveys during the campaign period will receive a ¥500 digital gift voucher, guaranteed!

Kobe City Historical Archives

The Kobe City Historical Archives officially opened on June 1, 2026.

This archive preserves and makes use of official records documenting more than 130 years of Kobe City's history.

Open Hours: 9:00 AM~5:00 PM (Closed on weekends and public holidays)

Location: 2-3-33 Honmachi, Hyogo Ward

Admission: Free

Inquiries: 078-335-6760



Reading Room

Visitors can use the archive's document search system to locate materials of interest.



Exhibition Room

Visitors can learn about Kobe's modern and contemporary history through exhibits and historical materials.



もっと知ろうKOBE

Hydrangeas: A Seasonal Highlight of the Rainy Season

Hydrangeas are at their peak blooming period from June and into July! Enjoy these beautiful seasonal flowers at the following locations:

Suma Rikyu Park

Viewing Period: Until Sunday, July 5

Inquiries: 078-732-6688



Kobe Municipal Arboretum

Viewing Period: Until Sunday, July 12

Inquiries: 078-591-0253



Rokko Alpine Botanical Garden

Viewing Period: Early June until mid-July

Inquiries: 078-891-1247



Rokkosan Pasture

Around 300 sheep, cows, goats, horses, and other animals roam freely amid the ranch's peaceful pastoral scenery. Visitors can also enjoy a variety of hands-on activities, including horseback riding and workshops on making dairy products!

Open Hours: 9:00 AM ~ 5:00 PM (Last admission: 4:30 PM)

Admission:

-- General admission: ¥600 (March to November) / ¥400 (December to February)

-- SHS students and younger, and adults aged 65 and over: Free (proof of age required) Parking fees may apply.

Inquiries: 078-891-0280



Must-Try Events!

Tanabata Festival @ Aina Satoyama Park

Date & Time: Sat. July 4,
3:00PM ~ 8:00PM and
Sun. July 5, 10:00AM ~
5:00PM



Fees: General Admission (SHS and above) is ¥450. Parking fees may apply

Inquiries: 078-591-8000



Kodomo Work in Kobe

(At various locations throughout Kobe, including Kobe Port)

An interactive event where children can learn about careers connected to the sea through hands-on experiences at actual worksites!



Dates: Sat. July 18 ~ Fri. August 7

Eligibility: Elementary and junior high school students and their parents/guardians

Fee: Some workshops may require a fee

Registration: Via website

(selection by lottery or first-come, first-served, depending on the workshop)



Ozo Mud Volleyball Tournament @ Fruit and Flower Park

(Held at the rice paddies near the entrance to Fruit & Flower Park Ozo Rest Area)

Enjoy a unique volleyball tournament played in a muddy rice field!

Date&Time: Sunday, July
26, 9:00 AM ~ 4:00 PM

Fee: ¥15,000 per team

Registration: Via website.

Applications accepted until July 8;
participants selected by lottery.

Inquiries: 078-954-0301

