

### Invasive Species Around Us: Let's Learn and Act Together!

【特集】もっと話そう【外来生物と野生動物】のこと

身近にいる  
困った生きものに  
ご用心!



このイラストは、市内にいる  
厄介な外来生物・野生動物たち。  
みなさん、いくつ分かりますか？  
暮らしや農業に被害を与える  
困った生態、その対策や  
LINEでの通報方法を紹介します。

If you have any questions about ward  
office procedures, financial support for  
raising children, etc.

**Call the Kobe International  
Community Center (KICC)!**

☎ 078-742-872 | (11 languages)



↑ Scan here  
to visit the  
website!



# Let's Learn About Invasive Species and How to Prevent Them From Harming Our Lives!

## What Are Invasive Species?

Creatures that are brought into places where they did not originally exist — as food, pets, or hidden in containers of imported goods. They can cause damage to crops and negatively impact ecosystems.

### Invasive Species in Kobe:

#### Red-necked Longhorn Beetle (*Aromia bungii*)

**Appearance:** About 3-4 cm in length, with a red neck, and a glossy black body.



#### Asian Long-horned Beetle

#### (*Anoplophora glabripennis*)

**Appearance:** About 2-3.5 cm in length. The wing base is glossy, and the body has white markings.

**These pests cause extensive damage!**

**Its larvae feed on and kill trees.**

\*If you find either type of beetle, please report it to Kobe City!!\*

**To learn more, visit the  
Invasive Species Exhibition Center!**



Japan's only public facility dedicated to the issue of invasive species. Explore interactive exhibits featuring educational videos, quizzes, and other fun and engaging games!

In-house specialists are also available to offer clear, easy-to-understand explanations.

[Further Details \(JPN\)→](#)



# Raccoon (*Araiguma*) - A crafty food connoisseur that wreaks havoc on crops!

Invasive species

Precautions:

- \*Prevent raccoons from entering into your home, and eliminate their nesting spots.
- \*Never feed raccoons.
- \*Raccoons may carry transmittable diseases! Be sure to wear a mask and rubber gloves when cleaning up feces or urine.



# Wild boar (*Inoshishi*) - Feeding them is strictly prohibited, as they can become accustomed to humans!

Precautions:

- \*If a wild boar approaches to you, remain calm and slowly back away.
- \*If the boar shows signs of aggression, drop your bag or belongings away from your body to distract it.
- \*Never feed wild boars.



Wild animal

★Inquiries: 078-333-4408

Operating hours: 8:00AM~9:00PM  
(Available year-round)

## ★Make a Report via LINE

Eyewitness reports accepted via LINE.



Please help our ecosystems by reporting invasive species via [LINE](#)!

Further Details (JPN)→



## School of Fish is Reopening with a Brand-New Look!

Learn about marine life and environmental issues at the newly renovated School of Fish ("Sakana no Gakkou")! There is also a shop offering a variety of fish-themed merchandise.



**Open Hours:** 9:30AM~5:30PM

**Admission:** Free (Some hands-on activities require fees)

**Inquiries:** 078-742-6930



←School of Fish

Ocean Kids Lab→



## Climb Up and Enjoy the Scenic Views from Goshikizuka Tomb!

### New information facility will open next spring!



Hyogo's largest *kofun* burial mound, built in the late 4th century and located just a 5-minute walk from Kasumigaoka station, offers a breathtaking panoramic views, including the Akashi Kaikyo Bridge and the Seto Inland Sea.



Left) Goshikimaru  
Right) Tarumiko

Further Details (JPN)→



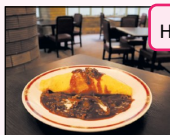
## A Favorite Local Landmark: Mikage Public Hall (Higashinada Ward)

A modern architectural gem, rich with early Showa era vibes!



Hot Spot ①

A nautical-inspired design that reflects Kobe's maritime charm



Hot Spot ②

Savor the rich flavor of a classic demi-glace sauce

**Location:** 4-4-1 Mikageishimachi, Higashinada-ku

**TEL:** 078-841-2281

Further Details (JPN)→



# Let's Go on a Mountain Adventure!

## Yamada Road: A great choice for hiking beginners

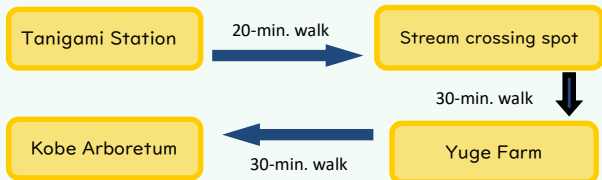
With a gentle 200-meter incline, the Yamada Road is a wide, forested trail perfect for a refreshing walk and forest bathing.

Difficulty: ★☆☆ Distance: approx. 3.3 km

Time required: 80 minutes



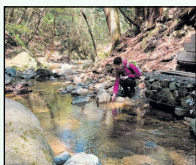
[↑ Further Details](#)



## For Safe Mountain Climbing:

Start early, walk at a steady and comfortable pace, and stay hydrated. Remember to always bring a map with you!

[Further Details→](#)



### Stream Crossing Spot

Relax among the rocks, enjoy the forest atmosphere, and cool off by dipping your hands and feet in the clear water. Please stay away when the water level is high, as it can be dangerous.



### Take a Break and Have Lunch at Yuge Farm!

Enjoy a luxurious menu of creative cheese dishes at Cheese House Yargoi!

[Further Details \(JPN\)→](#)



### Hydrangea Season at Kobe Arboretum

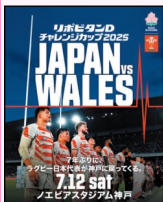
From mid-June to mid-July, around 50,000 hydrangeas will be in bloom, creating a vibrant display!

[Further Details \(JPN\)→](#)



# Must-Try Events!

## Japan vs. Wales Rugby Match (Hyogo Ward)



The Japan National Rugby Team is returning to Kobe for the first time in seven years! Come watch this electrifying match against Wales!

**Date & Time:** Saturday, July 12, 2:50PM~4:50 PM

**Venue:** Noevir Stadium Kobe

**Admission:** Fee required

**Register for Tickets:** Via official website. First-come first served.

Further  
Details  
(JPN)→



## Discover the World of Alpine Plants! (Nada Ward)



The “Queens of the Alpine Garden,” the *komakusa* and edelweiss flowers, will be in full bloom this June.

Take this chance to stroll through the Rokko Alpine

Botanical Garden at its most vibrant period!

**Date & Time:** Until Sunday, July 13, 10:00AM~5:30PM

**Admission:** Fees required for admission & parking

**Inquiries:** 078-891-1247

Further Details (JPN)→



## What's the Name of This Bug? (Nishi Ward)

Try catching all sorts of bugs at the park and learn more about your bugs from the “Insect Professor”! A fun and educational experience for parents and children alike!



**Target Audience:** ES students & parents/guardians

**Admission:** Free

**Date & Time:** Saturday, July 19, 9:30AM~11:30AM

**RSVP:** Via website by Thursday, July 3

(Participants will be decided by lottery)

**Inquiries:** 090-3050-4944

Further  
Details  
(JPN)→

