

K O B E

Kobe City PR Digest English April 2025

More Fun After School And On Weekends!

KOBE◆KATSU



If you have any questions about ward office procedures, financial support for raising children, etc.



Call the Kobe International Community Center (KICC)!

☎ 078-742-872 | (11 languages)

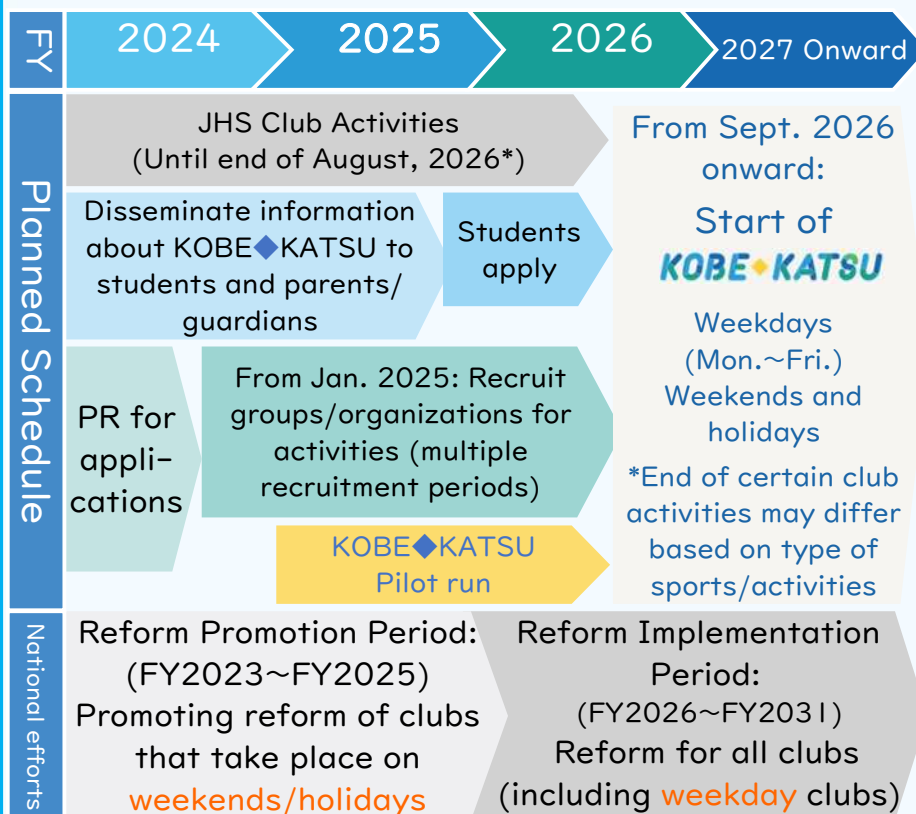
↑ Scan here to visit the website!



More Fun After School And On Weekends! KOBEDKATSU

KOBEDKATSU Starts September 2026!

Junior high school club activities, which have traditionally been led by teachers, will transition to a new program called KOBEDKATSU. This change will allow students to choose activities based on their interests and motivation, enabling them to have a more fulfilling afterschool experience.



PLUS 1 Find an activity that interests you!!

PLUS 2 Apply yourself in a real-world context!

PLUS 3 Make the most out of your junior high school student life!

FAQ Page (JPN) →



Two-Day Event to Experience the Latest in Disaster Preparedness!

Kobe Expo: From the Earthquake, to the Future



An event will be held to pass on the memory of the Great Hanshin-Awaji Earthquake to future generations, while also providing opportunities to learn the latest disaster prevention technologies and initiatives for disaster preparedness and mitigation.

Date & Time: Saturday, April 26 & Sunday, April 27
10:00AM~5:00PM

Venues (see below):

- ① Design and Creative Center Kobe (KIITO)
- ② Minato no Mori Memorial Park
- ③ Shinko Daiichi Tottei, west side
- ④ Meriken Park

Admission: Free

Further
Details
(JPN)→



Let's Go to Higashinada Danjiri!

Higashinada Danjiri, a traditional event to pray for health and prosperity, will be held again this year during Golden Week!



Dates: Saturday, May 3
to Monday, May 5

Further
Details
(JPN)→



Kobe City Budget Outline

What is Kobe City's budget being used for?

1. Ensuring the Safety and Lifestyle of Residents

City-operated security cameras will be installed in residential areas, train station areas, and along school commuting routes for improved security and safety.

2. Creating a Warm, Welcoming Kobe

The subsidy program will be expanded for senior high school students living in (or commuting to a school in) Kobe City to have their commuting costs covered.



3. Creating a Sustainable Kobe

In order to conserve forestry and restore rural areas, sustainable/cyclical use of forest resources will be promoted, in cooperation with private companies and local organizations.



4. Creating a Lively, Charming Kobe

Including changes to the running route for the Kobe Marathon.

5. Creating a New, International Kobe

International charter flights from Kobe Airport are now in operation.



6. Promoting Citizen Participation Through Use of Digital Transformation

In autumn, a new branch office for MyNumber-related procedures will open on Rokko Island.

**Further Details
on Kobe City
Budget (JPN)→**



Routine Shingles Vaccinations Now Available

Starting April, the shingles vaccine will be a routine vaccination for persons aged 65 years old (those who already received the vaccine in the past are *not* eligible). Persons aged 66+ may be eligible for the vaccine under transitional measures.

Eligible Persons:

Group ①: All individuals who are 65 years old during the 2025 fiscal year

Group ②: Persons ages 60 to 64 years old, who are immunocompromised due to HIV.

Live vaccine	4,000 yen per vaccination
Recombinant vaccine	10,000 yen per vaccination, total of 2 rounds

Out of Pocket Cost:

Kobe City subsidy for the vaccine will be offered only in FY2025.

Eligible Persons: Ages 50 to 60 years old

Subsidy Amount: 4,000 yen (Subsidy is applicable only once, regardless of the type of vaccine)

Vaccination Voucher:

For eligible group ① and persons eligible under transitional measures: Vouchers will be sent in late April.

For group ② and persons applying under the City's subsidy: Please apply for your voucher at your local ward office, through e-KOBE, or email.

Inquiries: 078-777-4349

**Further
Details
(JPN)→**



(Higashinada Ward)

60th Anniversary Sanrio Exhibition: “The Beginning of Kawaii”

Fans of Sanrio can enjoy this collection of rare original artwork and vintage merch. Get a behind-the-scenes look at how Sanrio characters first came to life—plus stunning collabs with contemporary artists! (You can take pictures in the exhibit!)

Date & Time: Until Sunday, June 29

10:00AM~5:00PM (Last entry 4:30PM)

Admission: Fee required

Further Details (JPN)→



Must-Try Events!



Azalea Excursion (Nagata Ward)

From late April to early May, over 4000 azaleas will be in bloom at

Sorakuen Garden! Enjoy spring with Japanese sweets stall, tea ceremony, and more!

Date & Time: Until Tuesday, May 6

9:00AM~5:00PM (Last entry 4:30PM)

Venue: Sorakuen Garden

Admission: Garden entrance fee required

Inquiries: 078-351-5155

[Further Details
\(JPN\)→](#)



Hanamizuki Festival (Nagata Ward)

Nagata Ward's official flower, the dogwood ("hanamizuki"), typically blooms around late April.

Come enjoy the feeling of spring while experiencing one of the ward's biggest festivals!

Date & Time: Tuesday, April 29,
10:00AM~4:00PM

Admission: Free

Inquiries: 078-691-2914

[Further Details
\(JPN\)→](#)



Infiorata Kobe at Kitanozaka (Chuo Ward)

A beloved tradition in Kobe, pictures are created using tulip petals, adding vibrant color to the town!

Dates: Saturday, May 3 to Monday,
May 5

Admission: Free

Inquiries: 078-251-7307

[Further
Details
\(JPN\)→](#)

